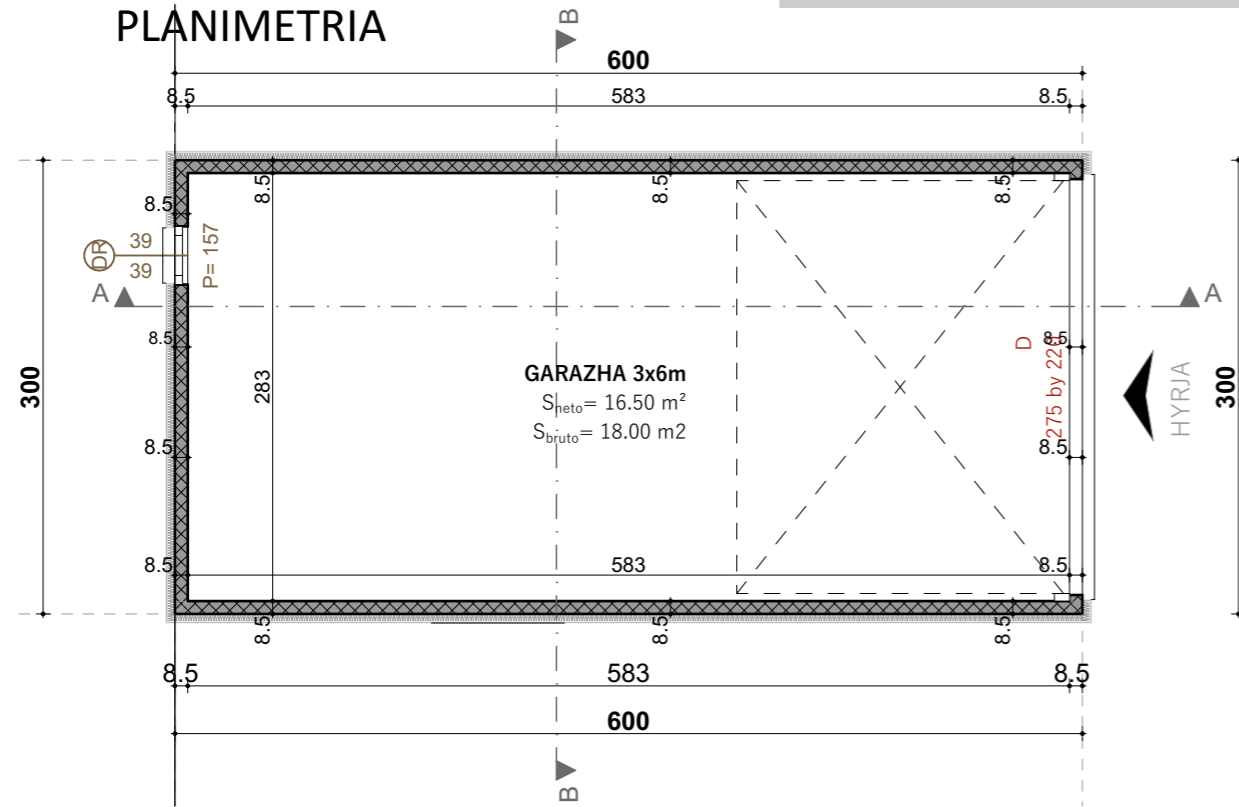
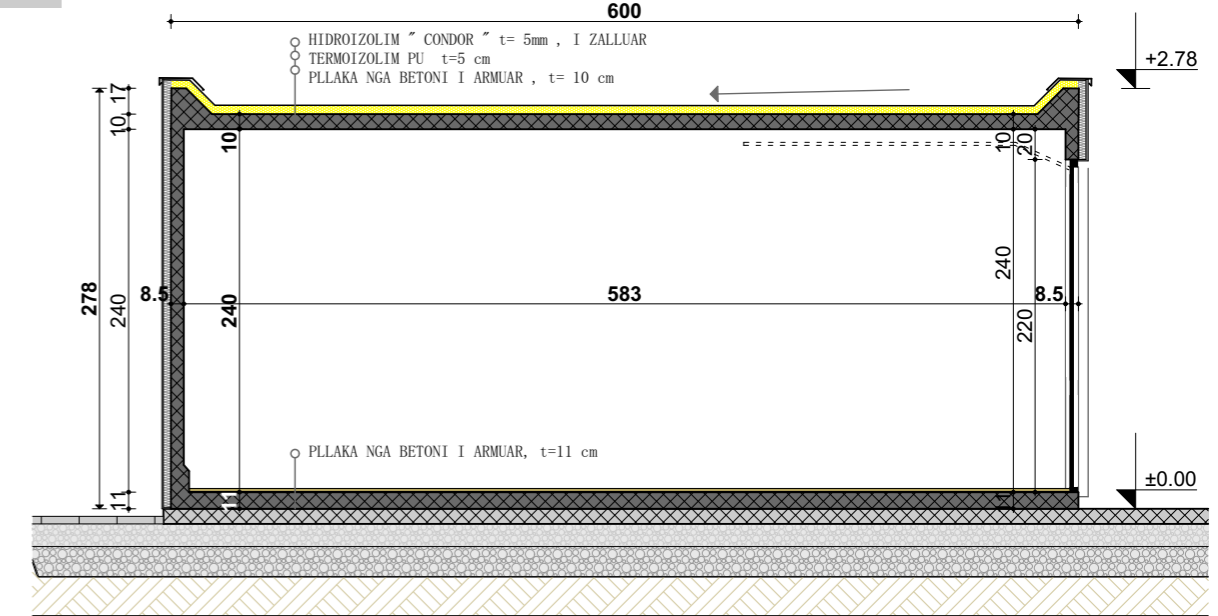


GARAZHA, parafabrikat, 3x6 m

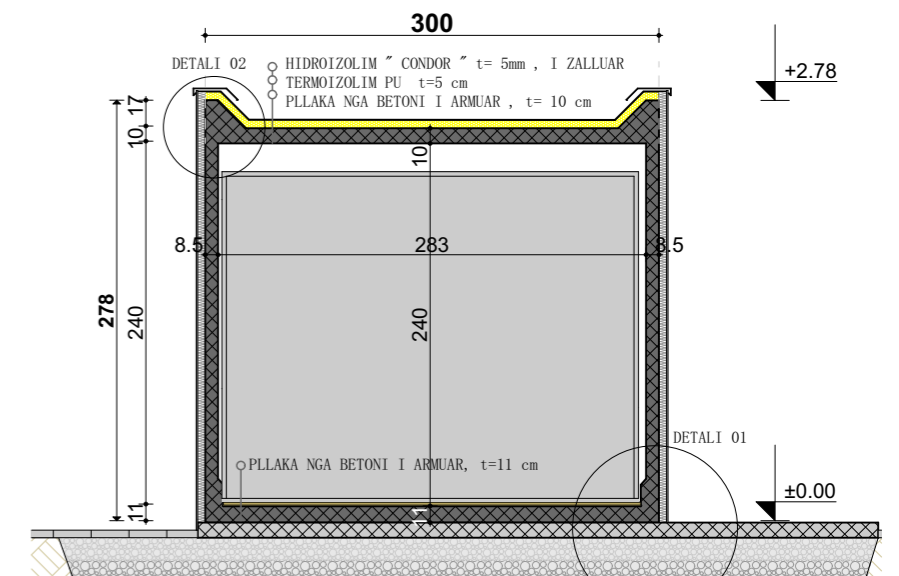
PLANIMETRIA



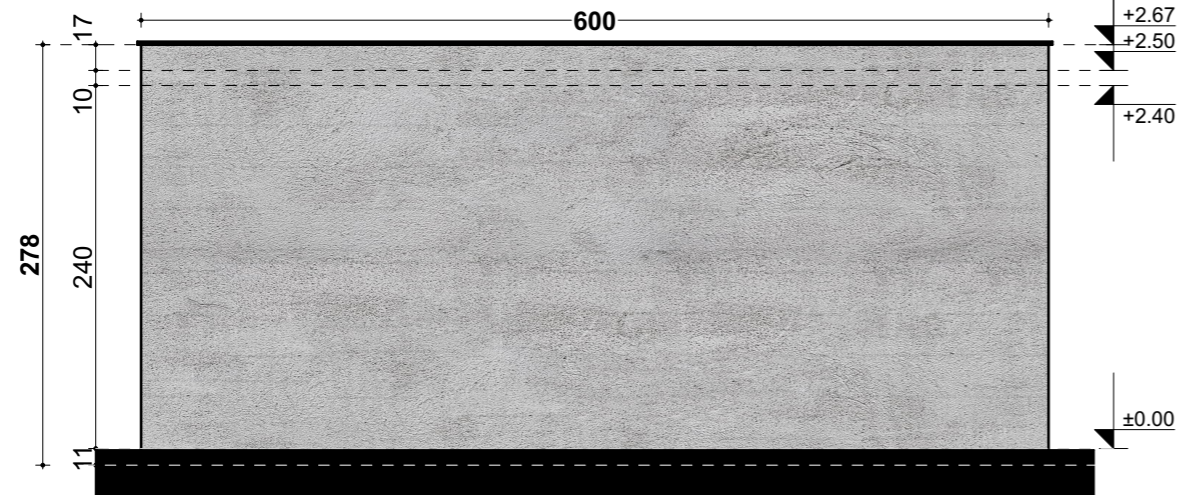
PRERJA A-A



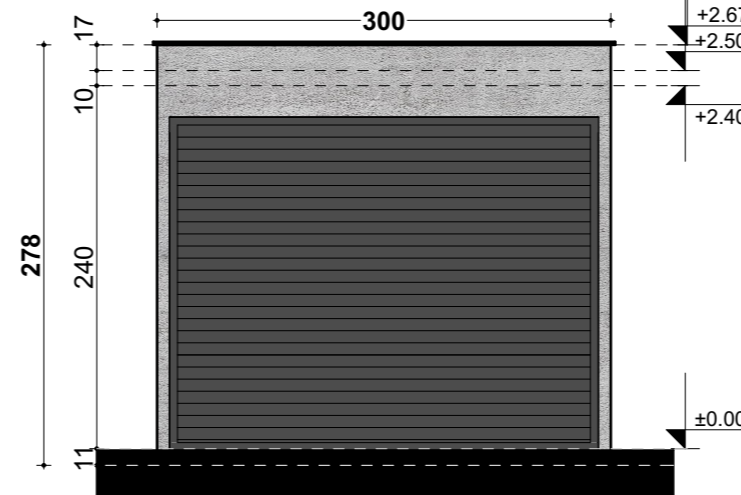
PRERJA B-B



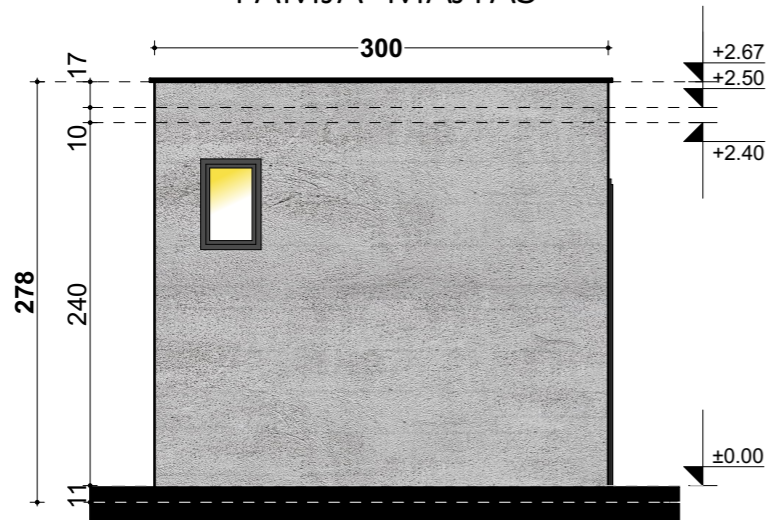
PAMJA BALLORE



PAMJA DJATHTAS



PAMJA MAJTAS



PAMJA MBRAPA



Klienti :	SHKUMBINI-AG ISNIQ - DEÇAN
Objekti :	VILE MONTAZHE 1 MODUL 
Kategoria e Projektit :	PROJEKT ZBATUES
Dizajnuar nga :	Ark. Blerim BAJRAKTARAJ inxh.dipl.
Vizatuar nga :	ark. Erinda HALILI
Kontrolluar dhe Aprovuar nga :	Ark. Blerim BAJRAKTARAJ inxh.dipl.
Përmbajtja :	GARAZHA, 3x6m modul i parafabrikuar
Data: Nëntor 2020	Faza: ARKITEKTURA
Përpjesa: P=1/50	Byroja (vula): 
Fleta nr. : 02	Formati: ISO A3